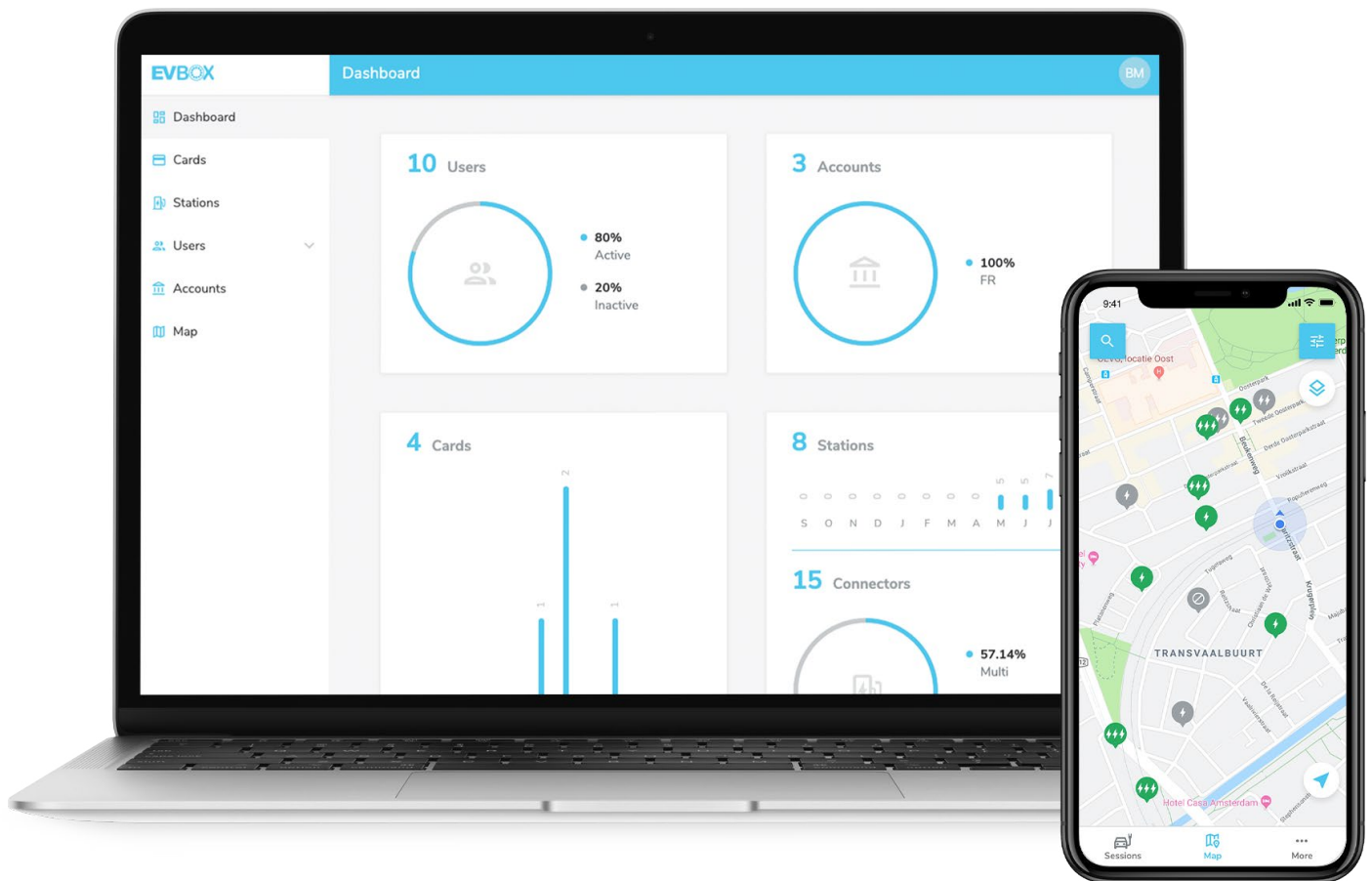


# EVBox

## charging management

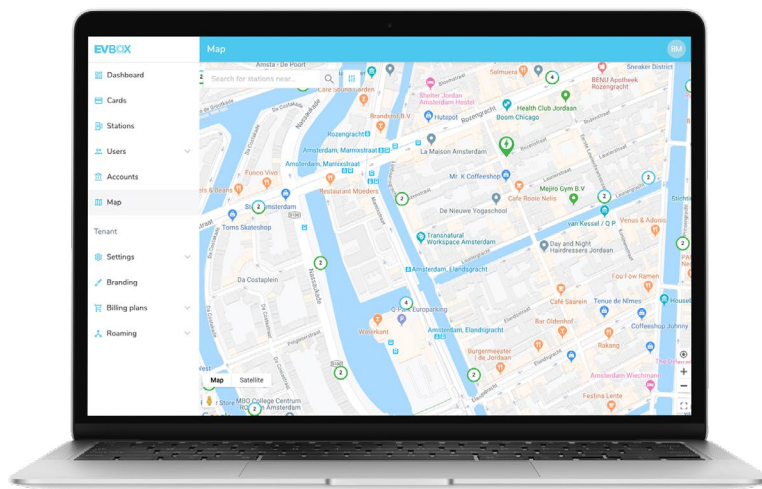
The future of transportation is electric.  
EVBox prepares you and your business for this transition.





# Meet EVBox charging management

Easy, intelligent, and insightful. Our EVBox charging management software lets you track, manage, and optimize electric car charging, wherever you are.



## Hassle-free invoicing

Automate the invoicing and reimbursement of charging costs with multiple stakeholders and generate hassle-free income by setting fees for your charging station users.

## Easy and smart management

Manage multiple charging stations, transactions, and users from a single interface with ease and (energy) efficiency.

## Insights into your business growth

Get real-time insights into charging transactions and behavior. Add an unlimited number of users, stations, and cards to scale and sustain your EV charging business.

### IDEAL FOR



Apartments and private homes



Workplaces



Commercial parking



Retail



Hospitality

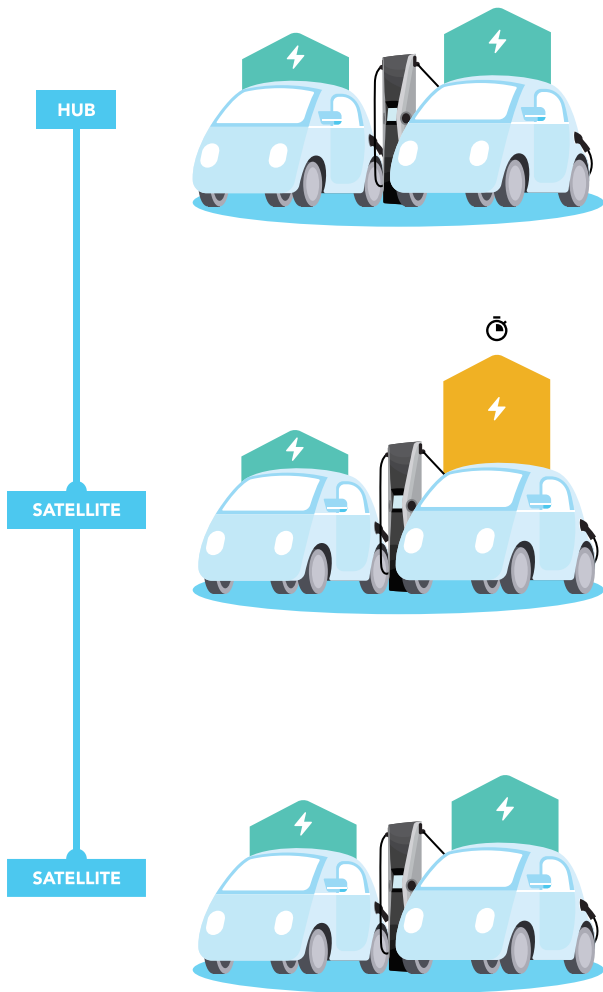


Car fleets



Transit and transport

# How does EVBox manage charging stations?



With EVBox, you can view the **status and usage data** of your charging stations, automate remote updates of your stations' firmware, and get access to 24/7 support.



EVBox ensures that every car is charged optimally at all times, by allowing you to group up to 20 charging points using the **Hub-Satellite** configuration. This configuration helps you to manage multiple charging points per location, reduce your connection fees, and distribute the available power capacity—no matter the limit.



EVBox also gives you the option to set up **charging profiles** by adjusting your stations' maximum power capacity based on the power available at your location. You're also able to set charging schedules that can vary over the course of a day or week.



You can even have EVBox configure your charging stations to **autostart** without using any physical tokens (e.g. charge cards or apps).

The screenshot shows a web interface for 'Static Smart Charging'. It includes a text input for 'Charging profile name' (containing 'Charging profile') and a numeric input for 'Maximum current (A)' (containing '200'). Below these are three expandable sections for 'Monday', 'Tuesday', and 'Wednesday', each with a horizontal slider for scheduling. The sliders are currently set to a range from 12:00 AM to 12:00 PM.

SMART CHARGING

# How does EVBox help you settle costs and earn revenue?



**Set charging fees** based on kWh consumed by your users and receive monthly revenue straight into your account with the **automated invoicing** process.



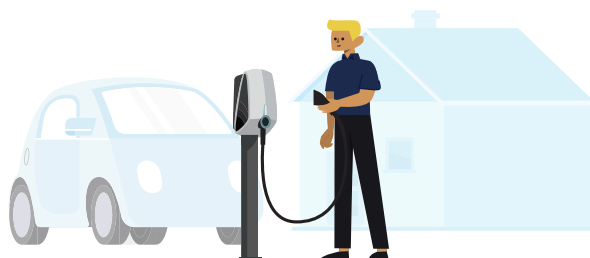
You can choose from a number of access settings for your charging station(s) and **publish your charging stations online**. This ensures that all EV drivers can find your stations via various apps.



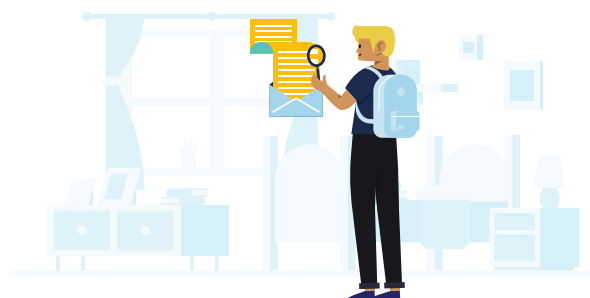
EVBox also collects charging transaction data to help you easily manage the settlement and reimbursement of charging costs. You can choose to automate this entire process using the **automated reimbursement** service.



Employer and employee agree on a reimbursement rate per kWh.



Employee charges the EV at home and EVBox collects the charging data from the connected and metered station.



On a monthly basis, the employee receives a credit invoice and payment based on the agreed reimbursement rate and the actual consumption.



Employer receives the invoice for the reimbursed transactions.

Connector	Ended on	Duration	kWh	Cost (excl VAT)	Reimbursable
1	8 Jan 2020, 13:52	~ 3 hours	11.09 kWh	€2.44	€0.00
<b>Transaction Details:</b>					
Start	Tue 8 Jan 2020, 10:59		Charging cost	€2.44	US-CES-C00010001-A
End	Tue 8 Jan 2020, 13:52		Private charging		Demo 1
1	7 Jan 2020, 22:52	~ 6 hours	21.64 kWh	€4.76	€0.00
1	4 Jan 2020, 08:22	~ 12 hours	7.32 kWh	€1.61	€0.00

**QUICK AND EASY AUTOMATED SETTLEMENT**

# How does EVBox scale your business?



EVBox grants **users access** based on your needs and their responsibilities. You can add as many users to your account as you need.



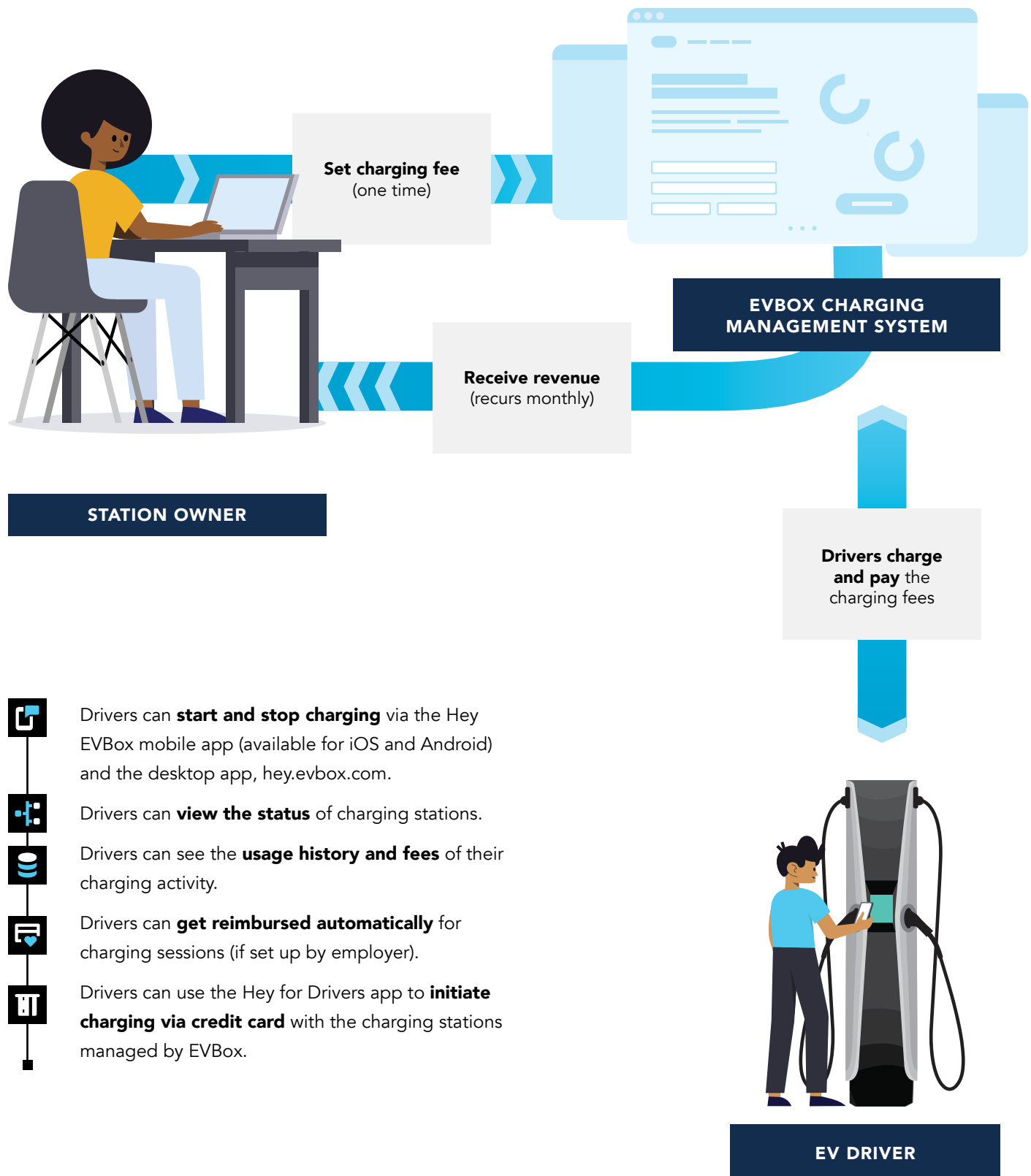
EVBox also gives you **real-time insights** into charging sessions and charging behavior (e.g. kWh charged, duration) per user, station, location, and time. You can also observe active charging sessions and export **detailed reports** as PDF and CSV files.

DOWNLOAD REALTIME  
AND HISTORICAL  
INSIGHTS

Employee Parking Garage / Transactions					
Connector	Ended on	Duration	kWh	Cost (excl VAT)	Reimbursable
3	7 Jan 2020, 02:50	~ 5 hours	23,15 kWh	\$10,00	\$0,00
<div><div><div>🕒 Start Mon 6 Jan 2020, 21:44</div><div>🕒 End Tue 7 Jan 2020, 02:50</div></div><div><div>💰 Charging cost \$10,00</div><div>📍 Public charging</div></div><div><div>📄 US-CES-C00010002-A</div><div>🏢 EVBOX</div><div>📄 3</div></div></div>					
4	6 Jan 2020, 21:55	~ 3 hours	9,36 kWh	\$4,00	\$0,00
2	6 Jan 2020, 21:55	~ 3 hours	18,65 kWh	\$18,00	\$0,00
4	6 Jan 2020, 05:22	~ 10 hours	14,91 kWh	\$7,00	\$0,00
2	6 Jan 2020, 05:22	~ 8 hours	3,96 kWh	\$3,00	\$0,00
1	6 Jan 2020, 03:01	~ 8 hours	9,79 kWh	\$7,00	\$0,00
3	6 Jan 2020, 03:01	~ 8 hours	7,01 kWh	\$6,00	\$0,00



# How does EVBox work for EV drivers?



# Get started with EVBox

The EVBox charging management system is compatible with all EVBox charging stations. Here's how you can get your own.



## TELL US YOUR PREFERENCES

Enter your preferences in a short online form available at [evbox.com/quote](https://evbox.com/quote).  
It's free and takes just two minutes!



## GET YOUR FREE QUOTE

We'll give you a call to discuss your needs and provide you with  
a commitment-free price estimation.



## TECHNICAL VISIT

Upon approval, our technicians will inspect your site and power capacity  
to determine your final installation plan and price.



## INSTALLATION & ACTIVATION

Our highly-skilled and certified installers will safely set up your new station  
at the optimal location on your site.



## MAINTENANCE & SUPPORT

Alongside our partners, we provide you with ongoing maintenance and support.  
We're available 24/7 online and via phone.

Get started today at [evbox.com/quote](https://evbox.com/quote)





Learn more at **evbox.com**

Copyright © 2020 EVBox Manufacturing B.V. EVBox® and the EVBox logo are registered trademarks. All rights reserved. EVBox has compiled this document to the best of its knowledge but does not warrant that all information provided is error-free; EVBox does not accept liability in that respect. All specifications are approximates only. The limited warranty conditions are stated in the applicable EVBox general terms and conditions. EVBPI\_CMS\_EN\_052020 © EVBox Manufacturing B.V. Fred. Roeskestraat 115, 1076 EE Amsterdam, The Netherlands. [evbox.com/support](https://evbox.com/support)

